

iPCAM-WI Wireless Internet Video Camera – Quick Installation Guide

For Online Support visit: <http://www.security.honeywell.com/hsc/resources/MyWebTech/>

General Information

This guide provides information on installing and setting up Honeywell's iPCAM-WI Camera. This camera is ideal for monitoring your home, business or public facilities. Some major features of this camera are:

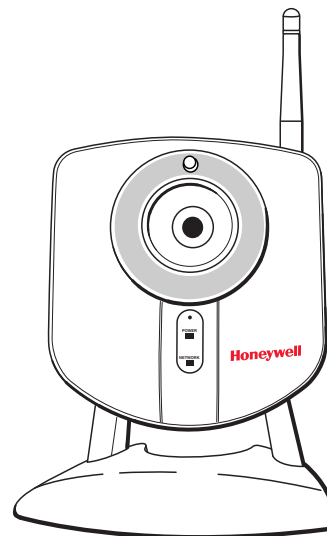
- Wired or Wireless communications to a router or access point. Wireless communications utilizes the 802.11g protocol with WPS security. WPS (Wi-Fi Protected Setup) is a standard for easy setup of a secure wireless network.
- Color video can be monitored through your Total Connect remote services account. Up to 6 cameras can be used.

IMPORTANT: This camera is for indoor use only. DO NOT mount this camera within one [1] foot of any wireless device.

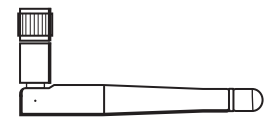
To utilize this camera, you must have:

- Security system with a GSM, i-GSM or internet communications device.
- Total Connect account. (If an account does not exist, the dealer should use the AlarmNet Direct website to setup a Total Connect account for the customer.)
- Internet access with a router capable of DHCP hosting. For wireless, the router must also support one button WPS data encryption. If this is not available, order the Honeywell WAP Wireless Access Point for connection to your router.

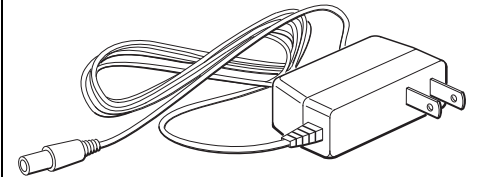
PACKAGE CONTENTS



Camera and Stand

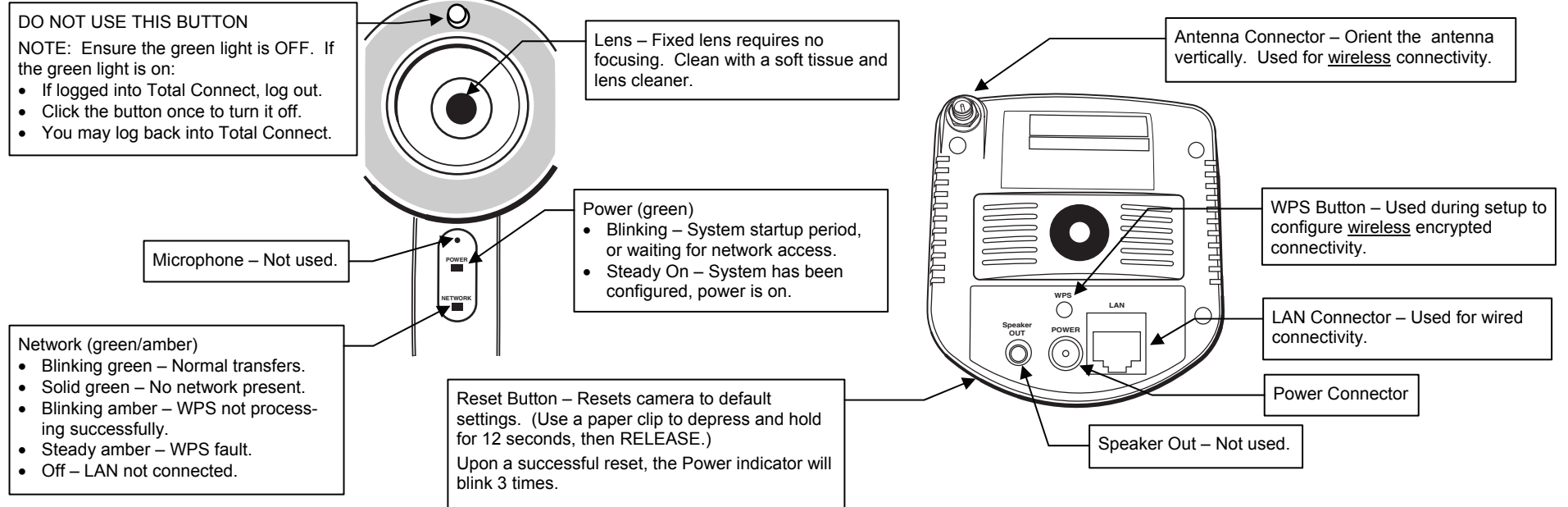


Antenna



Power Transformer

Component Identification



1. Assemble and Mount the Camera

1. Attach the camera to its stand. Ensure the stand's screw post is fully seated in the camera's threaded mount.
2. Tighten the locking nut on the stand's threaded post.
3. **If using wireless connectivity**, attach the antenna to the camera. Orient the antenna vertically and tighten the knurled connector.
4. If mounting the camera to a vertical or overhead surface, use the mounting holes on the base plate along with screws that are suitable for the mounting surface.
5. Connect the Power Transformer wire to the Power Connector on the camera back. **At this time DO NOT plug the power transformer in.**

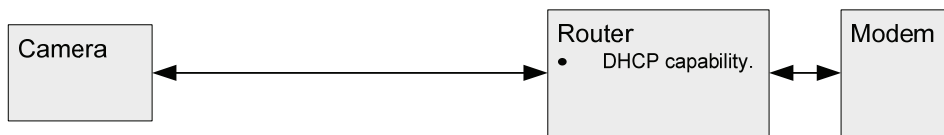
IMPORTANT: In order for the camera to be placed in the wired mode, the Ethernet cable must be connected first, then power applied. Likewise in order for the camera to be placed in the wireless mode, ensure the Ethernet cable is NOT connected, then apply power. Follow the directions on the right carefully for applying power.

NOTE: The Power Transformer must be powered by a non-switchable power outlet.

6. Refer to the diagram below, and determine which configuration applies.

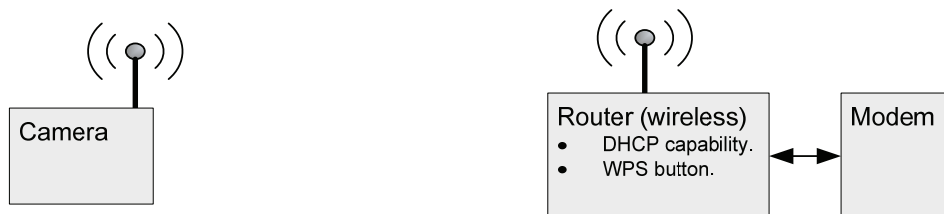
Configuration #1

You are using a wired connection and your Router supports DHCP.



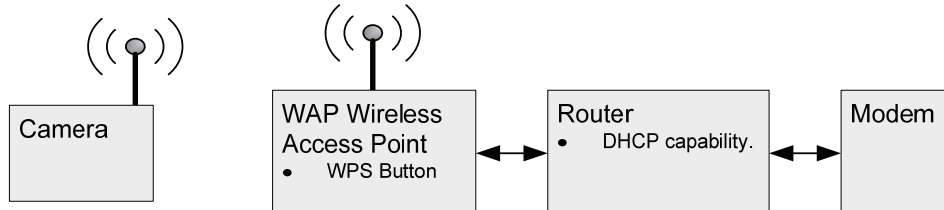
Configuration #2

Your wireless Router supports DHCP and one button WPS encryption.



Configuration #3

Your wireless Router supports DHCP but DOES NOT support one button WPS encryption.



2. Power and Configure Wireless Security

If you have Configuration #1 – Connect each camera to the router using an Ethernet cable. Then plug the Power Transformer into an outlet. The camera installation is DONE.

If you have Configuration #2 – Complete all the steps below.

If you have Configuration #3 – You must attach the optional Honeywell WAP Wireless Access Point to the router, then complete all the steps below.

NOTES:

- When setting up a wireless configuration in very large buildings or buildings with dense walls, wireless communications may be marginal. It is best to first configure the system in the same room. Then upon successful configuration, place each camera in the desired location. Check to see that all cameras exhibit good communications as indicated by a STEADY GREEN Power LED and a Network LED that occasionally BLINKS GREEN.
- If using more than one wireless camera, each must be configured for wireless security.
- If using a router instead of Honeywell's WAP, please ensure your router is configured for DHCP. (This is the default setting for most routers.) If you are unsure, you can access the router's configuration page and set it for DHCP (refer to the router's manual). Since the operation of each router varies, please refer to the router's manufacturer for support.

Configuring Wireless Security:

When initially powered up, the camera and WAP use the same default AES key and encryption parameters. To create a new AES key, please perform the steps below.

1. Ensure an Ethernet cable is not connected to the camera, then plug the Power Transformer into an outlet. Wait for the Power indicator to light solid.
2. Press and hold the WPS button on the router, or WAP Wireless Access Point, for **3 seconds**, then RELEASE.
3. Within **1 minute**, click and RELEASE the WPS button on the camera.
4. Allow up to 45 seconds for the WPS to complete, then verify successful wireless security as indicated by a STEADY GREEN Power LED and a Network LED that occasionally BLINKS GREEN. If these indicators are present you are done.
5. Repeat the steps above for each camera.

Unsuccessful Wireless Security Indications

LED Indicators	Comment / Action
Network – STEADY AMBER	WPS configuration was unsuccessful. Repeat steps 1 thru 4 above.
Network – BLINKING AMBER	Camera is searching for a WPS router or access point. Try the following: 1. Wait for the Network LED to turn STEADY AMBER. 2. On the router or wireless access point, press and hold the WPS button for 3 seconds, then RELEASE. Allow up to 45 seconds for the WPS to complete, then verify successful wireless security as indicated by a STEADY GREEN Power LED and a Network LED that occasionally BLINKS GREEN.

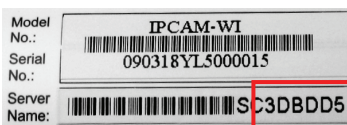
NOTE: If the camera is being used in a wireless mode and the Reset button on the bottom of the camera is used, you must reconfigure wireless security for that camera.

3. Add or Edit the Camera(s) in AlarmNet Direct

You will need the following information:

- AlarmNet Direct account with user name and password.
- Account number and MAC ID for the GSM, iGSM or internet communications device.
- MAC ID for each camera. The MAC ID is on the box.

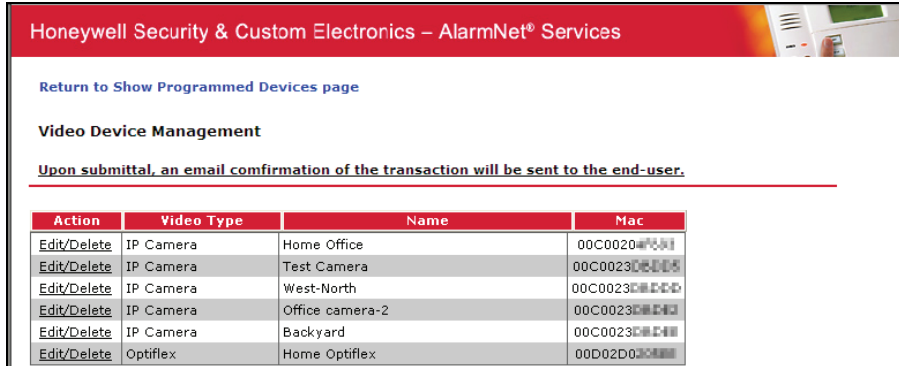
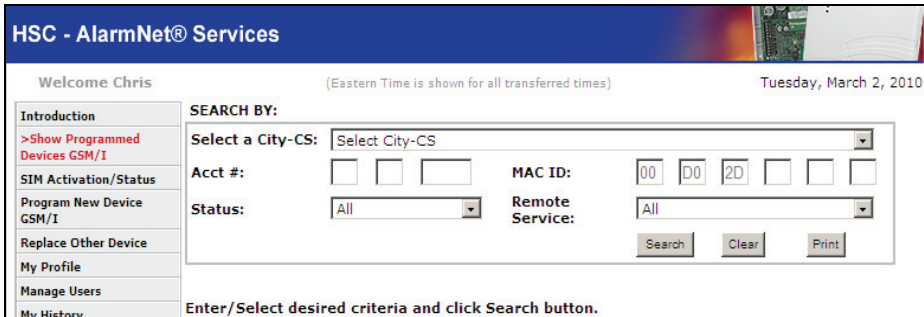
NOTE: If you are installing multiple cameras and they get separated from their boxes, the last 6 digits of the MAC ID is also on the back of the camera (Server Name).



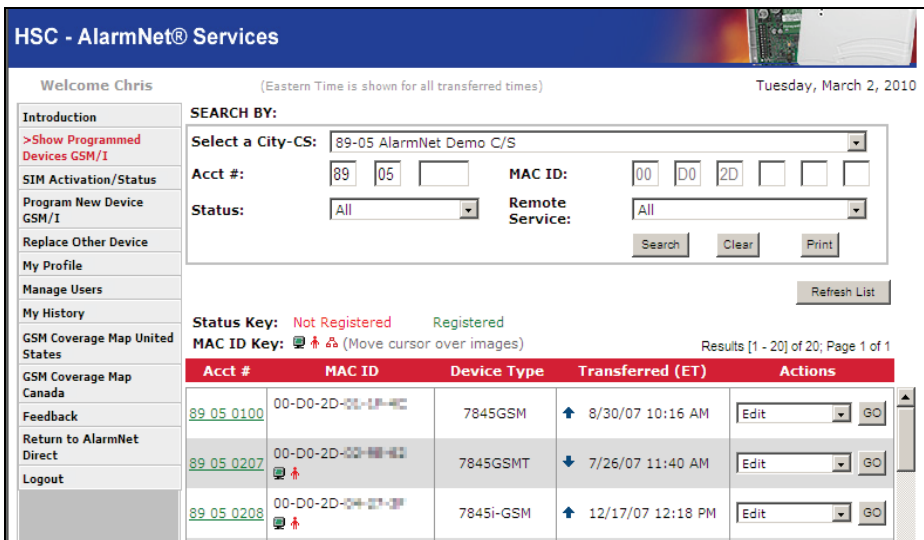
The last 6 digits of the MAC ID is also on the back of the camera.

1. Log into AlarmNet Direct. <https://services.alarmnet.com/AlarmNetDirect/>
2. Click **Show Programmed Devices GSM/I**.

6. From this screen you can add a camera by entering the VIDEO MAC ID (located on the box and on the back of the camera).



3. Search for the communications device by entering the customer Account # or the MAC ID of the communications device. Then click **Search**.

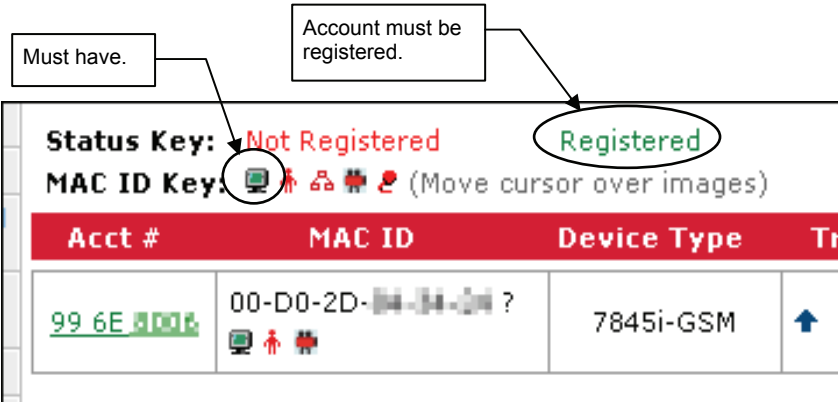


4. Ensure the account is active and enabled for **Remote Services**. This can be determined by looking at the status icons.

7. In the Video Device Name field, enter a friendly name for the camera such as; kitchen, porch, garage, etc.
 8. Click **Add Video Device**.
- NOTE: You can also edit an existing camera by clicking **Edit/Delete** in the Action column. This will allow you to change the Video Device Name, or simply delete that camera.
9. Save and close, then log out of AlarmNet Direct.

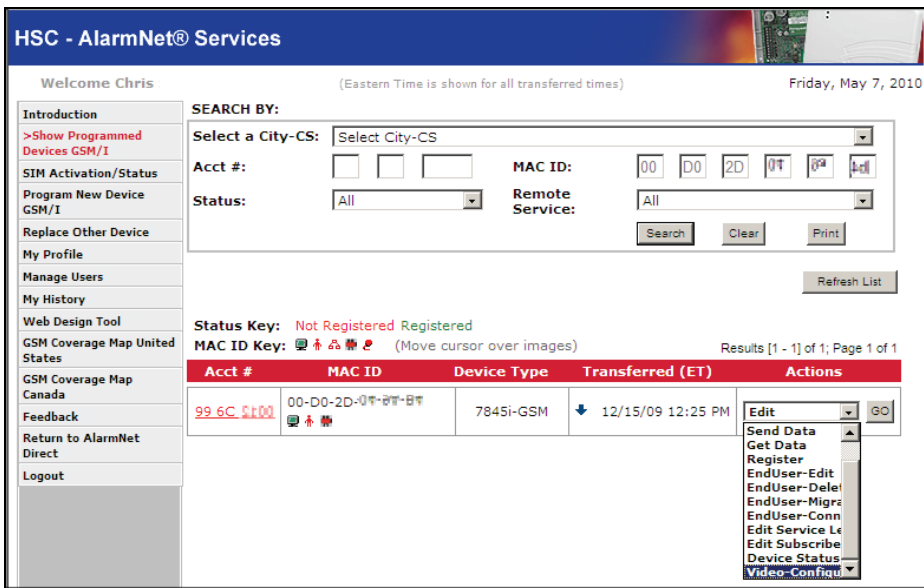
The cameras are now ready for customer use.

- Have the customer log into their Total Connect account to view the video.
 - If their PC does not have QuickTime® and Flash® Player, you will be prompted to install or update these applications.
 - If any of the cameras were mounted upside down, there is a setting to upright the image.
 - At this time the location of each camera can be adjusted for the desired view.
- NOTE: When adding, editing, or deleting a camera, the customer will receive email notification.



NOTE: If the account is not properly configured, refer to the online help and configure the account.

5. In the Actions column, use the drop-down menu to select **Video-Configure**. Then click **GO**.



TRADEMARKS

Honeywell is a registered trademark of Honeywell International Inc.
Flash is a registered trademark of Adobe Systems Incorporated, registered in the U.S. and other countries.
QuickTime is a registered trademark of Apple Inc., registered in the U.S. and other countries.



2 Corporate Center Drive, Suite 100
P.O. Box 9040, Melville, NY 11747

WARRANTY

For the latest warranty information go to:
<http://www.security.honeywell.com/hsc/resources/wa/>

Copyright © 2010 Honeywell International Inc.
www.honeywell.com/security



800-04431V2 5/10 Rev. A